

● JUNE 2024

# iowa

ELECTRIC COOPERATIVE LIVING

**PECO lineman heads to  
Guatemala**

**Anatomy of a power outage**

**Tasty turkey recipes**

**Nominate a community volunteer in statewide contest ► See Page 12**

# CONTENTS



6



8



10

VOLUME 77 • ISSUE 6

3

## STATEWIDE PERSPECTIVE

The storm  
has arrived

3

## EDITOR'S CHOICE CONTEST

Win an electric  
ice cream maker

14

## ENERGY MATTERS

EPA's power plant rules  
jeopardize reliability

15

## OUT BACK

From 6-on-6 basketball  
to the Caitlin Clark effect

**EDITOR**  
Ann Foster Thelen

**DESIGNERS**  
Megan Walters  
Bree Glenn

**IAEC EXECUTIVE VICE PRESIDENT**  
Chuck Soderberg

**IAEC DIRECTOR OF COMMUNICATIONS**  
Erin Campbell

### IAEC BOARD OF DIRECTORS

Kenny VandenBerg, District 1 – President  
Jim Miller, District 5 – Vice President  
Deena Moore, District 4 – Secretary/Treasurer  
Tony Lem, District 2 – Asst. Secretary/Treasurer  
Jerry Keleher, District 3  
Gordon Greimann, District 6  
Bruce Amundson, District 7  
Marion Denger, Prairie Energy Cooperative – NRECA Representative  
Kevin Wheeler, Access Energy Cooperative – Managers' Representative

*Iowa Electric Cooperative Living* magazine (ISSN: 2770-8683) is published monthly by the Iowa Association of Electric Cooperatives, a not-for-profit organization representing Iowa's member-owned local electric cooperatives. Association address: 8525 Douglas Ave., Suite 48, Des Moines, IA 50322-2992. The phrase ***Iowa Electric Cooperative Living*** is a mark registered within the state of Iowa to the Iowa Association of Electric Cooperatives. The magazine does not accept advertising.

**Editorial Office**  
8525 Douglas Ave., Suite 48, Des Moines, IA 50322-2992. Telephone: 515-276-5350.

**Email Address**  
editor@ieclmagazine.com. *Iowa Electric Cooperative Living* magazine does not assume responsibility for unsolicited items.

**Website**  
[www.ieclmagazine.com](http://www.ieclmagazine.com)

**Postmaster**  
Send address changes to *Iowa Electric Cooperative Living* magazine, 8525 Douglas Ave., Suite 48, Des Moines, IA 50322-2992. Periodicals Postage Paid at Des Moines, Iowa, and at additional mailing offices.

**Change of Address**  
Every local electric cooperative maintains an independent mailing list of its members, so please send your change of address directly to your local electric cooperative's office. *Iowa Electric Cooperative Living* magazine cannot make an address change for you.

© Copyright 2024, Iowa Association of Electric Cooperatives. No portion of the editorial, photographic or other content of *Iowa Electric Cooperative Living* magazine or its website may be reproduced without written permission of the editor.



## ON THE COVER

Special thanks to Alicia Moss, whose parents are North West REC member-consumers, for supplying this month's cover image. Submit high-resolution photos for consideration to [editor@ieclmagazine.com](mailto:editor@ieclmagazine.com). You could receive \$100!

# THE STORM HAS ARRIVED

BY KEVIN CONDON



With Iowa's 2024 Legislative Session in the rearview mirror, Iowa's electric cooperatives are looking back to note what did

NOT pass the 90th General Assembly. While some pieces of legislation passed that are beneficial to rural electric cooperatives (RECs), it is fair to say that co-ops have been forced to take a defensive posture at the Statehouse for the past few years.

Notably, in 2023, lawmakers passed, and Gov. Reynolds signed into law a bill to help ensure reliable and resilient power generation sources (House File 248) and another that preserves local control over decision-making at the cooperative (House File 599). However, based on the last two legislative efforts at the Iowa Capitol, electric cooperative supporters should be aware that more concern is on the horizon.

## Looming concerns

Service territory protections, integrated resource plans, government overreach into private contracts and weakening of safety protocols are among the troublesome topics that have surfaced at the Statehouse in the past few years. Perhaps of utmost concern is the barrage of out-of-state entities and national organizations that seem to be flocking to Iowa to push agendas of half-truths and scare tactics, all draped in the veil of "liberty" and "free market" principles.

One only needs to take a few minutes to research who is bankrolling these "consumer groups" to discover that a wolf is knocking at the door dressed in sheep's clothing. Outfits based in Texas, Florida, New York and California have all invested serious time and money into Iowa in an effort to weaken your cooperative's ability to provide safe and reliable power.

The only important question now is: Who will your lawmakers listen to?

## A matter of trust

Without question, the storm is no longer brewing over these critical energy issues; it has arrived. And now, consumers and lawmakers will have a choice to make: trust your locally owned and governed electric cooperative or take the word of out-of-state corporations that are not locally owned or governed.

Your electric cooperative is guided by seven key principles, one being Concern for Community. The first electric cooperative to provide power in Iowa is more than 100 years old, and many others will celebrate their 90th anniversaries in the next few years. RECs aren't going anywhere. We have been here for decades, providing affordable and reliable service to our neighbors.

I realize that such a dire warning might seem like more political hysteria or hyperbole. I can assure you that it is not. The next decade of energy policy in the U.S. and Iowa will set electric co-op member-consumers on an energy course that could hurt our communities for generations to come if it's not managed with the local interests of consumers in mind.

Now is the time to become educated on energy issues that matter to your community so that you can help inform those you vote for on Election Day.

Please contact your local cooperative or visit [www.iowarec.org](http://www.iowarec.org) and [www.iaruralpower.org](http://www.iaruralpower.org) for more information on responsible energy policy.

*Kevin Condon is the director of government relations for the Iowa Association of Electric Cooperatives.*

## EDITOR'S CHOICE CONTEST

## WIN AN ELECTRIC ICE CREAM MAKER!

When it comes to homemade ice cream, "the more, the better" is the motto of this family-friendly machine. Ideal for entertaining, it makes two quarts of your favorite frozen dessert in a single batch (in just 25 minutes). The clear plastic lid has an opening for adding mix-ins like chocolate chips and nuts.

### Visit our website and win!

Enter this month's contest by visiting [www.ieclmagazine.com](http://www.ieclmagazine.com) no later than June 30. You must be a member of one of Iowa's electric cooperatives to win. There's no obligation associated with entering, we don't share entrant information with anyone and multiple entries from the same account will be disqualified. The winner of the \$100 garden center gift card from the April issue was Leland Kreimeyer, a Franklin REC member-consumer.



**ENTER ONLINE BY JUNE 30!**

# POWERING A BRIGHTER FUTURE: VENZ HEADS TO GUATEMALA

Access to electricity can transform lives, as we well know. Once upon a time, in rural parts of America, farmers and ranchers banded together to form electric cooperatives so they could have access to reliable and affordable electricity.

Rural electrification has the power to improve the quality of life for families and workers in America and beyond. This notion is why we support international projects through a core cooperative principle near and dear to our hearts: cooperation among cooperatives.

## Co-op volunteers ready to change lives

This month, 14 volunteer linemen from Iowa and Minnesota will travel to southeastern Guatemala from June 6-21. They will bring power to two remote mountain villages in the area of La Hortiga – an advancement that can transform lives in the region. The National

Rural Electric Cooperative Association International project includes building about 3 miles of overhead power lines and wiring approximately 15 homes for lighting and electrical outlets.

Hunter Venz, Prairie Energy Cooperative (PECO) lead lineman, is among the volunteers who are donating his time and knowledge to this project.

“Volunteering is a chance to give back,” says Venz. “When you realize how these people have lived for years without electricity and are still getting by, it’s remarkable. When all is said and done, and we can flip a switch with everything coming online, seeing their faces and the impact this will have on their lives is going to be priceless.”

## Challenging conditions

The challenges of this project include mountainous terrain at an elevation of 10,000 feet and working on stringing overhead lines and framing poles without modern equipment, such as bucket trucks. Temperatures will be around 50-70



PECO lead lineman Hunter Venz will join the NRECA International project in Guatemala.



Follow along with the PECO Facebook page for updates or scan the QR code to see updates from the Guatemala Project Facebook group.

degrees F. Crews will work long days (up to 11 days straight) to complete the project.

Once the lights are on, the local municipal utility will manage the distribution system.



**Office:** 2099 Highway 3 West – P.O. Box 353  
Clarion, IA 50525

**Office Hours:**  
Monday – Friday, 7 a.m. – 3:30 p.m.  
Closed Saturdays, Sunday and holidays

**Phone:**  
1-515-532-2805 (local) or  
1-800-728-0013 (24/7)

**Email:** prairieenergy@prairieenergy.coop

**Facebook:** facebook.com/PrairieEnergyCooperative

**Website:** www.prairieenergy.coop

This institution is an equal opportunity provider and employer.

## HIGH FIVES FOR LOCAL STUDENTS

Recently, a group of Prairie Energy Cooperative linemen went to an elementary school for High 5 Fridays. This event provides an opportunity for our community’s local heroes, such as police, nurses, doctors and others, to greet the kids for the last school day of the week. Our linemen enjoyed meeting with local youth!



# FOSS RETIRES AFTER 39 YEARS

Todd Foss began his career with Prairie Energy Cooperative (PECO) on April 1, 1985, as an apprentice lineman. He successfully completed the apprenticeship program and received his journeyman's license in 1989.

After working with the line crew for eight years, Foss accepted the marketing member service representative position in October 1997. With changes in the industry, the key account manager position was created, and he took over that role in May 1999. PECO has always been involved with economic development within the service territory, and in 2010, Foss took on the role of manager of community and business development.

## Reflecting on a co-op career

When asked what he enjoyed most during his years at PECO, Foss shared:

"When I was on the line crew, I loved knowing what we were doing every day was for our members. The waves and smiles we got when the lights turned back on from an outage were priceless. Ice storms were never fun, but it was part of the job, and we did

everything possible to get the power back on for members as safely and quickly as possible.

I enjoyed problem-solving and working with the large commercial and industrial members. We worked through issues such as the difficult concerns of rate changes or how to reduce their demand during peak times.

Economic development is a roller coaster ride – but when a project made it to the finish line, and I could say to myself, 'I was a big reason those new jobs are here,' it really made me feel good!"

Foss says he'll miss his coworkers and the fabulous friends he's made over the 39 years of his career.

"My coworkers are like family. I'm going to miss seeing them daily," he says. "After all these years, I truly enjoyed coming to work and working with our members. God bless, and forever forward!"

His retirement plans include spending time with family and friends, relaxing in Florida in the winter, and enjoying life's simple pleasures.



## NEW EMPLOYEES JOIN PECO

Two new employees have recently joined the Prairie Energy Cooperative (PECO) team.



CHRIS JONES

Chris Jones has taken over the role of manager of community and business development. Originally from Armstrong, Jones worked as a lineman and later a member services representative for more than 10 years. When he's not working, Jones enjoys spending time with his two sons and watching them play sports.



ASA WAYLAND

Asa Wayland joined the operations crew as an apprentice lineman. Originally from Denison, Wayland attended Northwest Iowa Community College and is working toward obtaining his journeyman's license. When he's not working, Wayland enjoys being outdoors, fishing, playing sports and spending time with his partner Grace and daughter Rowan.

**Congratulations and welcome to PECO!**

A woman with blonde hair, wearing a striped shirt and pink pants, is loading a black and white dog into the back of a dark-colored SUV. The car's rear hatch is open, and a silver suitcase with an orange hat on top is on the ground. The scene is set in front of a large, modern house with many windows and a stone foundation. The ground is wet, suggesting it might have rained.

# SET YOUR HOME TO VACATION MODE

BY MIRANDA BOUTELLE

Just like you, the equipment in your home is hard at work getting through the daily grind. If you're planning a vacation to enjoy a new adventure or time away, it is also an excellent time to give your home's equipment a break, too. Doing so can reduce unnecessary energy waste and unneeded wear and tear on your heating and cooling system, appliances and more.

**TIP 1**

### Adjust your thermostat

Your heating and cooling system keeps you comfortable. If you aren't there, it doesn't need to be quite so comfortable in your home. Setting the thermostat closer to the outdoor temperature can save you energy and money – though it's not recommended to turn off the heating or cooling system completely. In extreme weather, your heating and cooling system also helps protect your home from freezing pipes or damage from excessive heat.

As a rule, you can typically set your thermostat 5 to 10 degrees F closer to the outdoor temperature when you aren't home. Each home is different, and the weather varies depending on where you live. Consider the right temperature balance for your home.

Installing a smart thermostat gives you the ability to control your settings remotely from your smartphone. This allows you to adjust the temperature after you leave home and right before you return.

**TIP 2**

### Remember your water heater

Most water heaters include a "vacation mode" setting. This setting drops the temperature to reduce wasted energy when you're away. A storage water heater is like an insulated tea kettle, standing by and ready for you to have hot water whenever you need it. Give that water heater a vacation, too. Changing the setting to vacation mode keeps it on at a lower setting, saving energy. Leave yourself a note with a reminder to turn it back on when you get home so you don't wind up with a disappointing shower before the first day back at work.

**TIP 3**

### Easy "to dos" for efficiency and security

Closing the curtains can provide two benefits. It can keep heat from the sun at bay. It also reduces the load on your heating and cooling system, which saves energy. Plus, closing curtains has the benefit of blocking visibility into your home when you're away.

For security, some people use timers or leave on exterior lights. Make sure any lights left on are LEDs, instead of incandescent or compact fluorescent bulbs. LEDs use less energy and have less impact on your electric use when left on all night. You can also consider adding smart LEDs to your home. Smart LEDs can be controlled remotely through an app on your phone.

**TIP 4**

### Unplug all of your unnecessary items

Some devices in your home continue to draw power from your electrical outlets even when turned off or on standby. Before you leave, walk through your home and unplug devices and small appliances. Make sure gaming consoles and computers are fully powered down. Unplugging any devices that have lights, clocks or use standby mode can also reduce wasted energy.

Having peace of mind that your home is powered down and secure can help you enjoy your vacation. After all, we all need an occasional break.

*Miranda Boutelle writes on energy efficiency topics for the National Rural Electric Cooperative Association, the national trade association representing nearly 900 electric co-ops.*

Closing the curtains keeps heat from the sun at bay and blocks visibility into your home.



When you aren't home, set your thermostat 5 to 10 degrees F closer to the outdoor temperature. Consider upgrading to a smart thermostat, which gives you control over the temperature from anywhere.



Having peace of mind that your house is powered down and secure can help you enjoy your vacation.



# tasty turkey

## RECIPES



### KALE PESTO TURKEY BURGERS

- 2 pounds ground turkey
- ½ cup Parmesan cheese, grated
- ¾ cup prepared pesto, divided
- ¾ teaspoon salt
- 1 cup kale, finely chopped
- ½ cup mozzarella cheese
- ½ cup sun-dried tomatoes, julienned
- ½ cup light mayonnaise
- hamburger buns

Mix turkey, Parmesan cheese, ½ cup pesto, salt and kale. Form into six patties and grill or fry until they reach an internal temperature of 165 degrees F. Top with mozzarella cheese and sun-dried tomatoes for the last 5 minutes of cooking. Mix mayonnaise and ¼ cup pesto. Spread on buns and add burgers.

Jacquilyn Hearn • Batavia  
Access Energy Cooperative

### HOT TURKEY SALAD

- 2 cups turkey, cooked and cubed
- 2 tablespoons minced onion
- 1 cup celery, finely diced
- ½ green pepper, finely diced
- ¼ cup mayonnaise
- 1½ cups cheddar cheese, grated (or preferred cheese)

Mix ingredients together and bake at 350 degrees F for 20 minutes. Serves 4-6

Amy Martens • Wellman  
T.I.P. Rural Electric Cooperative

### TYE'S TURKEY MARINADE

- ¾ cup orange juice
- ¾ cup soy sauce
- ¼ cup honey
- ½ cup onion, chopped
- 4 cloves garlic, crushed
- 2 teaspoons black pepper
- 2 teaspoons ginger
- 4 pounds turkey (tenderloin or other cut)

Combine all ingredients except for turkey. Place turkey into marinade and let stand for 1 hour. Grill turkey until done and serve. Serves 4-6

Alicia Pacha • Brighton  
Access Energy Cooperative

### TURKEY STIR FRY

- 1 cup brown rice
- 1½ tablespoons olive oil
- 1 package coleslaw mix
- 2 carrots, grated
- 2 stalks celery, cut up
- 1 onion, chopped
- 1 8-ounce can water chestnuts
- 3 cups turkey, cooked and shredded
- 2 tablespoons soy sauce

Cook rice until tender, set aside. Heat oil in saucepan and add coleslaw, carrots, celery and onion. Cook until just tender. Add water chestnuts, turkey and soy sauce. Heat for about 3 minutes then serve over a bed of rice.

Mary Gropper • Chelsea  
T.I.P. Rural Electric Cooperative

## TURKEY NOODLE VEGGIE CASSEROLE

- 8 ounces noodles
- ¼ cup celery, chopped
- ¼ cup onion, chopped
- ½ cup peas
- ½ cup carrots, cut
- 3 cups chicken broth
- 1 can cream of chicken soup
- ½ soup can of milk
- 2 cups turkey, cooked and cut
- 1 cup Velveeta cheese, cubed

Cook noodles, celery, onion, peas and carrots in chicken broth. Do not drain. Add all other ingredients. Place in greased baking dish and bake at 350 degrees F for 40 minutes.

**Steph Messner • Rock Rapids  
Lyon Rural Electric Cooperative**

## OVERNIGHT TURKEY CASSEROLE

- 2 cups macaroni, uncooked
- 3 cups leftover turkey
- 2 cans cream of chicken soup
- 2 cans broth
- 1 small onion, chopped
- 1 cup mild cheese, diced
- ½ cup green pepper, chopped
- ½ cup celery, chopped
- 1 small can water chestnuts
- 1 teaspoon salt
- 1 4-ounce can mushrooms

Mix in order above. Put in greased 9x13-inch pan. Refrigerate overnight then bake uncovered at 350 degrees F for 1 hour. Freezes well. *Serves 15*

**Ardine Dillingham • Hartley  
Osceola Electric Cooperative, Inc.**

## PIZZA ROLLUPS

- 1 pound ground turkey, browned
- 2 cups mozzarella
- 1 teaspoon salt
- ½ teaspoon pepper
- 1 teaspoon Italian seasoning
- 1 tablespoon fresh parsley, chopped
- 1 loaf frozen bread dough, thawed
- 4 cups Italian tomato sauce

Mix turkey, cheese, salt, pepper and herbs. Roll out dough into 14x24-inch rectangle. Spoon mixture over dough. Roll up lengthwise and cut into 24 pieces. Place on greased cookie sheet, about 1 inch apart. Let sit for about 10 minutes then bake at 400 degrees F for 20-25 minutes or until golden brown. Serve with warmed Italian tomato sauce.

**Bethany Van Wyhe • Lester  
Lyon Rural Electric Cooperative**

## GRILLED TURKEY BURGERS

- 20 ounces ground turkey
- ¼ cup non-fat Greek yogurt
- 2 tablespoons mushrooms, finely chopped
- 2 cloves garlic, peeled and finely minced
- 1 green onion, finely chopped
- ½ teaspoon seasoned salt
- ½ teaspoon ground black pepper
- 2 tablespoons parsley or cilantro, finely chopped
- hamburger buns
- Optional toppings: pepper jack cheese, lettuce, tomato, avocado, red onion, ranch dressing

Mix the first eight ingredients together until thoroughly blended. Divide into four equal balls, roughly ½ pound each, then form into patties ¾-inch thick and 4-5 inches in diameter. Preheat grill to 400 degrees F (medium high). It should be at this heat at least 5 minutes prior to grilling to preheat the grates. Grill the burgers until the bottom cooks through and juices start to pool on top of the patties, about 5 minutes. Flip and cook until the patties reach an internal temperature of 165 degrees F, about 3-5 minutes. If desired, top with a slice of pepper jack cheese at the last minute or two of grilling. Remove and rest on a raised rack and toast buns on the grill. Assemble the burgers with additional optional items: lettuce, tomato, avocado, red onion and ranch dressing. *Serves 4*

**Jackie Netherton • Ida Grove  
North West Rural Electric Cooperative**

**WANTED:**

## FAMILY DINNER FAVORITES

**THE REWARD:**  
**\$25 FOR EVERY  
ONE WE PUBLISH!**

**Deadline is June 30.**

Please include your name, address, telephone number, co-op name and the recipe category on all submissions. Also provide the number of servings per recipe.



**EMAIL:** [recipes@ieclmagazine.com](mailto:recipes@ieclmagazine.com)  
(Attach your recipe as a Word document or PDF to your email message.)

**MAIL: Recipes**  
*Iowa Electric Cooperative Living* • 8525 Douglas Ave., Suite 48,  
Des Moines, IA 50322-2992

# ANATOMY OF A POWER OUTAGE

BY SCOTT FLOOD

Imagine that a stray bolt of lightning connects a menacing cloud with a power pole about a mile east of your home. Your lights flicker briefly before going out. Things become eerily quiet as all your home's devices equipped with motors and fans stop providing their constant symphony of background noise.

## Locating the issue

You're experiencing a power outage, so you reach for your phone and call your electric co-op. Good move. Sometimes, member-consumers don't call because they assume their neighbors will. However, the more

members who do make the call, the more quickly the co-op will be able to pinpoint the outage location.

Back at the office, the co-op's grid system operator noticed the sudden pause at the moment 300 million volts of lightning danced around a transformer, and they're able to triangulate the location of the outage. The system estimates just over 500 members are in the dark as a line crew tosses their dinner aside and steers their trucks in that direction.

Thirty minutes later, the lineworkers slowly drive along a stretch of road,

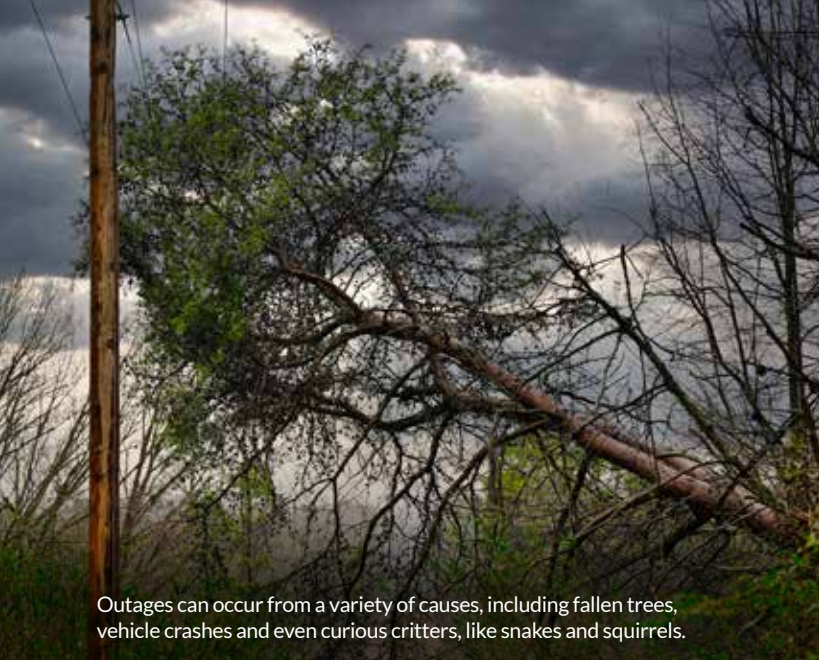
keeping one eye on traffic while inspecting every pole, wire and transformer. In another 8 minutes, they stop and step out for a closer look. The mystery is solved with one glance at the burn mark across the surface of the transformer. Ready to move closer to the line.

## Deliberate work ensures safety

If you watch the lineworkers, you might mistakenly assume they're not very motivated. After all, you're dealing with a power outage, you want it to end as soon as possible, and it looks like they're simply



Photo Source: Midland Power Cooperative



Outages can occur from a variety of causes, including fallen trees, vehicle crashes and even curious critters, like snakes and squirrels.



Photo Source: Corn Belt Power Cooperative

taking their sweet time while you're missing the ballgame. But there's a good reason the lineworkers aren't rushing or running around.

Those power lines carry high-voltage electricity. It's safe when all elements of the system are in good working order, but it's potentially deadly when that's not the case. Lineworkers approach what they do deliberately, efficiently – and, most of all, safely. Every action they take is carefully planned so they can spot potential hazards. When performing tasks, they follow standard procedures and safety requirements to ensure the repair is effective and sound. Working that way may take a little extra time, but it means they'll make it home safely at the end of the day (or night).

### Power is restored

Less than an hour after finding the cause of the outage, the lineworkers load their tools and gear back onto the trucks. This time, the problem was easy to spot, the repair was fairly straightforward, and the weather cooperated.

Driving back to the co-op, the lineworkers watch the passing homes and smile because the warm glow coming from the windows means the power's back on again. A couple of members in their yard wave as the trucks pass by. They may not know why the electricity went off and what was involved in

bringing it back, but thanks to the lineworkers, life is back to normal.

### Preparing for the unknown

Lightning streaks across the world's skies roughly 8 million times every day, and power poles, lines and other infrastructure provide attractive targets for helping lightning connect with the ground. But outages can occur from a variety of causes, including fallen trees, vehicle crashes and even curious critters, like snakes and squirrels.

And no two outages are exactly alike. The next one could be in severe weather or a remote segment far off the main road. It could involve a fallen tree that needs to be cut with chainsaws or a broken utility pole that needs to be replaced. The situation doesn't matter because lineworkers will always get to the location and fix the problem as quickly as safety allows.

This is why your electric co-op invests in the right technologies and equipment designed to protect the power grid and prevent outages from plunging your home into darkness. And it's also why the lineworkers, who put themselves at risk to return your life to normal, are some of our favorite people.

*Scott Flood writes for the National Rural Electric Cooperative Association, the national trade association representing nearly 900 electric co-ops.*

## SAFETY TIPS

If a power outage occurs:

- Call your local electric cooperative to report your outage – even if you think a neighbor has already called it in. The more calls received, the easier it is to identify the issue and determine the extent of the outage.
- Stay away from downed power lines and poles. Always assume all power lines are energized and dangerous unless told otherwise by an authority.
- Turn off the stove, oven and other appliances (except refrigerators and freezers with food) to prevent heavy startup loads that could cause secondary blackouts when power is restored.
- Unplug sensitive electronic equipment, such as computers, TVs and other home entertainment equipment, to avoid damage to them when power is restored.
- Keep refrigerator and freezer doors closed to prevent food from spoiling.
- Leave a light turned on so you'll know when the power is restored.
- Use flashlights during outages instead of candles to avoid fire risks.

# PECO IS SHINING THE LIGHT ON COMMUNITY VOLUNTEERS

June marks the start of the fourth-annual Shine the Light contest, which celebrates our cooperative commitment to community. This statewide contest will accept nominations for local volunteers in June and award three winners with a \$3,000 donation to their local charity or community organization.

"We're excited to participate in this cooperative effort to shine the light on local volunteers," shares Chad Chapman, Prairie Energy Cooperative (PECO) member services advisor. "So many friends and neighbors throughout our service area deserve to be recognized for making a positive impact."

Sponsored by the Touchstone Energy Cooperatives of Iowa, the Shine the Light contest will accept contest entries online during the month of June. The three winners will be announced in September.

## How to nominate

Members and employees of Iowa's electric co-ops are eligible to nominate local volunteers. If you receive electricity from PECO, you're a co-op member and are invited to nominate someone who is making a positive impact in the community. The volunteer being nominated does not need to be a co-op member. Minors may be nominated with consent from their parents or legal guardians.

Go to [www.iowaShineTheLight.com](http://www.iowaShineTheLight.com) from June 1-30 to make a nomination and to review the contest rules. Nominators will need to provide contact information and answer this question in 500 words or less:

**How has your nominee made a difference in the community and how might their local charity/nonprofit use the \$3,000 donation?**



# ANNUAL MEMBER APPRECIATION DAY

THURSDAY, JULY 18, 2024

4 - 7 p.m.

- ▶ Enjoy a meal on us or stop by for dessert!
- ▶ Enter to win prizes
  - Solo stove
  - 32qt RTIC cooler
  - Inflatable water slide
- ▶ Fun for the whole family
  - Bucket truck rides
  - Bounce house
  - and more!



4 - 7 PM

**18**

JULY

**THE RED  
SHED**

908 2ND ST NW  
CLARION IA 50525



A Touchstone Energy® Cooperative

# EPA RULES THREATEN RELIABILITY

On April 25, the Environmental Protection Agency (EPA) released its long-anticipated final rules aimed at existing coal and new natural gas power plants.

The four new rules to regulate power plants represent “the wrong approach at a critical time for our nation’s energy future,” says Jim Matheson, CEO of the National Rural Electric Cooperative Association (NRECA). NRECA represents nearly 900 local electric cooperatives throughout the U.S., including those in Iowa. From growing suburbs to remote farming communities, electric co-ops serve as engines of economic development for 42 million Americans across 56% of the nation’s landscape.

Matheson adds, “The path outlined by the EPA is unlawful, unrealistic and unachievable. It undermines electric reliability and poses grave consequences for an already stressed electric grid. The American economy can’t succeed without reliable electricity. Smart energy policy recognizes that fundamental truth and works to help keep the lights on. This barrage of new EPA rules ignores our nation’s ongoing electric reliability challenges and is the wrong approach at a critical time for our nation’s energy future.”

Specifically, NRECA believes the final rule is problematic for the following key reasons:

## 1 Disregards the law and Supreme Court decisions.

The rule violates the Clean Air Act because the EPA asserts vast new authority of major economic and political significance without a clear statement from Congress. It disregards the “major questions doctrine” and is inconsistent with the text, structure and context of Clean Air Act Section 111.

## 2 Requires the use of inadequately demonstrated technology.

While carbon capture and storage (CCS) is a promising technology, it is not yet widespread nor commercially available and thus has not been “adequately demonstrated” as is required. No units in the country are currently achieving the EPA’s required 90% capture rate consistently and while operating at baseload levels.

## 3 Mandates unrealistic and unachievable timelines.

There needs to be more infrastructure in place, especially massive pipeline networks, to support CCS and hydrogen, even assuming the technologies work as the EPA envisions.

The necessary infrastructure cannot reasonably be expected to be in place in time to meet the EPA’s requirements.

## 4 Jeopardizes reliability and affordability.

The final rule will reduce key generating resources, magnifying today’s reliability challenges with grave consequences for an already stressed electric grid. All of this will occur while the demand for electricity skyrockets as we electrify more of the American economy.

The EPA finalized its rule against a backdrop of daunting threats to reliability, as electricity demand surges at the same time supply is decreasing.

The Energy Information Administration projects that power demand will reach record highs in 2024 and 2025, increasing by 2.5% and 3.2%, respectively. Grid planners forecast electricity demand to grow by 38 gigawatts through 2028, the equivalent of adding another California to the grid.

Meanwhile, the North American Electric Reliability Corporation has warned that more than 110 gigawatts of always-available generation, enough to power about 35 million homes, will retire by 2033. Over the next five years, all or parts of 19 states are at high risk of rolling blackouts during normal peak conditions.

“

**This barrage of new EPA rules ignores our nation’s ongoing electric reliability challenges and is the wrong approach at a critical time for our nation’s energy future.”**

NRECA CEO Jim Matheson



**The rule is unlawful.** It violates the law, exceeds EPA’s authority, and disregards Supreme Court rulings.

**The technology isn’t ready.** The rule mandates the widespread adoption of technology that is promising, but not ready for prime time.

**The timelines are unrealistic.** The rule gives neither existing coal units nor new gas units enough time to reach compliance.

NRECA CEO Jim Matheson

# FROM 6-ON-6 GIRLS' BASKETBALL TO THE "CAITLIN CLARK EFFECT"

BY DARCY DOUGHERTY MAULSBY

There's a saying that everything in life can teach you a lesson; you just have to be willing to observe and learn.

I was thinking about this after Iowa Hawkeye legend Caitlin Clark became the No. 1 overall pick in the WNBA draft and joined the Indiana Fever.

Imagine the Iowa Hawkeye women's basketball star playing a game where the rules allowed her just two dribbles before she had to pass or shoot. Oh yeah – it would be illegal for her to cross the half-court line, too.

For most of the 20th century, this was girls' basketball in Iowa. The game was 6-on-6, with three girls on one side of the court playing defense and three on the other side playing offense.

## Uniquely Iowa style of play

While the rules might seem archaic now, 6-on-6 was wildly popular for generations. Especially in rural Iowa, it was fully supported and encouraged at a time when competitive team sports for women were relatively unheard of (and often discouraged).

Iowa's rich tradition of high school girls' basketball dates back to the 1890s and early 1900s. In many small schools, girls' 6-on-6 basketball proved more popular with fans than boys' basketball. At its zenith, the sport involved more than 70% of the girls in Iowa, by some estimates.

That's why some newspaper clippings and a trophy at Doug and Karen Lawton's farm south of Jefferson caught my eye. The items are displayed in Karen's "she shed," a former tire shop on the family's Century Farm. When I was working on a story about the shed, I asked Karen about this unique décor.

## Another leader for girls' basketball

Those items honor Luella (Gardeman) Boddicker, Doug's maternal grandmother. She was a star player on the 1927 Newhall girls' high school basketball team. As a sophomore, Luella was the team's leading scorer, hitting the basket that propelled Newhall High School to a 38-37 win over Sioux Center in the final game of the state tournament in Centerville.

This was the second tournament sponsored by the Iowa Girls High School Athletic Union (IGHSAU), which was organized in response to the Iowa High School Athletic Association's decision that organized basketball was unhealthy for girls.

"Luella rode horseback in the mid-1920s to speak out against that decision and save girls' basketball," Karen says.

Luella's specialty was the one-handed jump shot – 15 years before its introduction into boys' basketball, according to March 6, 1994, article "Memory Still Vivid After 67 Years" in the Cedar Rapids Gazette. This former farm girl and country school student (who moved to Newhall her sophomore year) mastered the one-handed jumper after Coach William Franklin told her if she didn't, "we'll never get anywhere."

After her senior season, Luella sold butter, eggs and cream to buy her only letter sweater. She couldn't afford one before that.

"In those days, you worked for what you got," she told the Gazette.

## A lasting hoops legacy

Luella became a farm wife and mother of three daughters, including Doug's mother, Dorothy (Dot), who was also a standout basketball player. Luella's accomplishments left a lasting legacy not only for her family, but the future of girls' high school basketball. She was inducted into the IGHSAU Hall of Fame in 1972.

Decades after Luella's achievements, Iowa remained one of the last two states (along with Oklahoma) to play 6-on-6 high school basketball. In 1993, the IGHSAU voted unanimously to end 6-on-6, as more girls wanted to play 5-on-5 in high school and college.

Clark herself has learned – and honored – the history of girls' 6-on-6 basketball in Iowa. Referencing the unprecedented interest in women's collegiate and professional basketball, "that doesn't come if it's not for the people who came before us," she told the media. You nailed it, Caitlin.

Darcy Dougherty Maulsby lives near her family's Century Farm northwest of Lake City. Visit her at [www.darcymaulsby.com](http://www.darcymaulsby.com).



Luella  
(Gardeman)  
Boddicker





IOWA ELECTRIC COOPERATIVE LIVING

The magazine  
for members of  
Iowa's electric  
cooperatives.

June 2024

Visit our website at [www.prairieenergy.coop](http://www.prairieenergy.coop)

# WHERE WE HAVE MEMBERS WE ACTIVELY LIVE OUR COMMITMENT

We're not just a service provider – we're active members of our community. We take pride in serving our members and going the extra mile in everything we do. Get closer to your **local cooperative** for ways we support you and strengthen our community.

