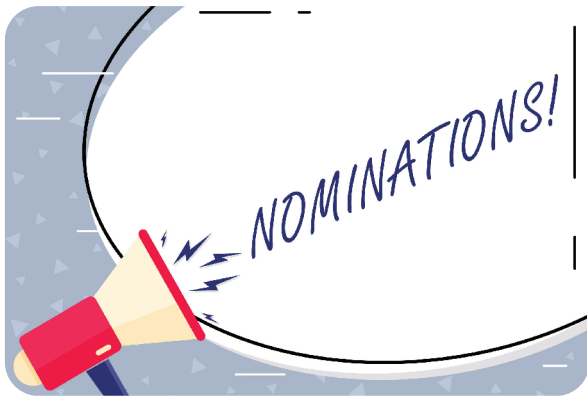


Seeking candidates for two positions on the board of directors



Prairie Energy Cooperative is a member-owned electric cooperative governed by a board of directors.

As a member, one of your most important roles is to participate in the election of directors. You can become involved in your cooperative by

serving on the board of directors.

Two positions on Prairie Energy Cooperative's seven-member Board of Directors will be open for election at the June 3, 2020, annual meeting. The three-year terms of Jim Wellik, District 2, and Marion Denger, District 5, will expire. Jim Wellik will not be seeking re-election. Marion Denger has indicated his willingness to serve another term.

District 2: Buffalo, Bingham, Wesley, Orthel, Britt, Garfield, Prairie, Boone, Erin and Liberty townships

District 5: Iowa, Scott, Lincoln, Blaine, Morgan, Wall Lake, Vernon, Oakland, Blairsburg, Williams and Alden townships

If you are a member in either District 2 or District 5 and are interested in serving on the board of directors, call the cooperative office.



Iowa Youth Tour dates announced

High school sophomores and juniors whose parents are members of Prairie Energy Co-op are invited to apply for the 2020 Youth Tour to Washington, D.C., held June 18-25 next year. The deadline to turn in an application is April 1, 2020.

The application process lets our judges get to know you and requires answering the following question: What moment in American history do you wish you had taken part of and what would you have contributed?

Contact Don Kammrad or Darren Johnson at Prairie Energy for more information.

Patronage returned to members

Prairie Energy Cooperative has always been not-for-profit. That means that when you became a member of the co-op, you share in the excess revenue and the return of that excess revenue to members, called patronage. As new funds continue to come in, the original funds can be paid back to members in the form of patronage retirement.

This year, members who purchased electricity from the co-op in 2001 and a portion of 2002 are receiving a refund (patronage) for those years, **totaling \$431,153**. This retirement will be returned in the form of a check, which you should receive this month.

If you receive a check and notice that the name and/or address needs to be updated, or you notice the check is in the name of a deceased member, please call the office immediately at 515-532-2805.



This Christmas, give yourself the gift of SmartHub! You will be able to schedule payments, receive new bill notifications, check your usage and so much more. There is also a SmartHub app to make access even easier. Contact us if you have questions.

Use your space heater safely

Electric space heaters can help quickly warm a room. However, they can be as dangerous as they are convenient if used improperly.

We urge everyone in the home to understand the importance of using space heaters safely:

- Purchase only space heaters that have been safety tested and UL approved. Make sure the unit is equipped with an emergency tip-over shut-off feature and heating element guards.
- Before using a space heater, make sure your smoke and carbon monoxide detectors are in good working condition.
- Check to make sure the heater is clean and in good condition.
- Place the heater out of high-traffic areas and on a level, hard, non-flammable floor surface.
- Space heaters provide supplemental heating. Never use them to thaw pipes, cook food or dry clothing or towels.
- Remember to keep space heaters at least three feet from combustible liquids and flammable items.
- Never allow pets or children near an electric heater.
- Do not overload circuits. Never use extension cords or multiple plugs with a space heater, and make sure the unit is not plugged into the same circuit as other electric appliances.
- If your heater is plugged into a ground fault circuit interrupter (GFCI) and it trips, don't assume there is something wrong with the GFCI. Immediately stop using the heater until a professional can check it.
- Never leave space heaters unattended. Turn off your space heater and unplug it before leaving the room or going to bed.
- Replace older space heaters with newer, safer models.



- Dependents of cooperative members are eligible to apply for a \$1,000 Basin Electric Power Cooperative scholarship for tuition at a two-year or four-year college. Contact your electric cooperative for an application form.
- Corn Belt Power Cooperative partners with **Northwest Iowa Community College** (NCC) in Sheldon, Iowa, to offer four \$500 scholarships. Recipients must be students at NCC studying Electrical Technology, Powerline or Powerline Technology. Contact Sheila Van Engen, (800) 352-4907 ext. 246 or svanengen@nwicc.edu.
- Corn Belt Power partners with **Iowa Lakes Community College** to offer one \$500 scholarship for students enrolled in the Wind Energy and Turbine Technology program. For information, contact Alison Mason, (712) 362-0491 ext. 4491 or amason@iowalakes.edu.

LED holiday lighting rebate

If you purchase new LED holiday lights and decorations, remember that we offer a rebate of up to \$2 for each item purchased (not to exceed purchase price).

Contact us or visit our website for more information.



The gift of love, the gift of peace, the gift of happiness . . . may these be yours this holiday season.



Bluetooth speakers can clarify and amplify volume to satisfy any media enthusiast.

Electronic gift guide

This holiday season, give the gift of tech!

Gifts for those on the go:

A portable charger can keep your on-the-go friend's smart phone and tablet juiced. Purchase for as low as \$20.

A Bluetooth speaker is another great gift. Purchase online or at local retailers for as low as \$30.

Gifts for the chef: A Bluetooth-connected thermometer can help your chef ensure a delicious (and safe-to-eat) meal. Prices vary from \$30 to \$200. You can purchase these handy gadgets online or at any big box store.

A digital kitchen scale is a must for any culinary pro. Prices vary depending on the weight the scale can handle, but you can find a 13-pound max weight scale for about \$20 on Amazon.com.

Gifts for the pet owner: Pet owners can always keep a watchful eye on their furry friends with a pet tracker. Prices vary depending on the tracker's capabilities, and you can purchase them online or at your local pet store.

You can also purchase surveillance cameras for real-time monitoring for as low as \$40 on Amazon.com.

With so many electronics available today, you're sure to find the perfect gift for your tech-savvy loved ones. Happy shopping!

May your holiday season be merry and bright

The holiday season is marked by beautiful decorations, delicious food and lots of festivities. We cherish carrying on old family traditions and enjoy creating new ones.

The holidays can also offer an opportunity to slow down and reflect. For all of us at your electric cooperative, we are grateful for you.

One of our founding principles is "Concern for Community." While our main focus is providing safe, reliable and affordable energy, we want to give back. We want to help your communities thrive.

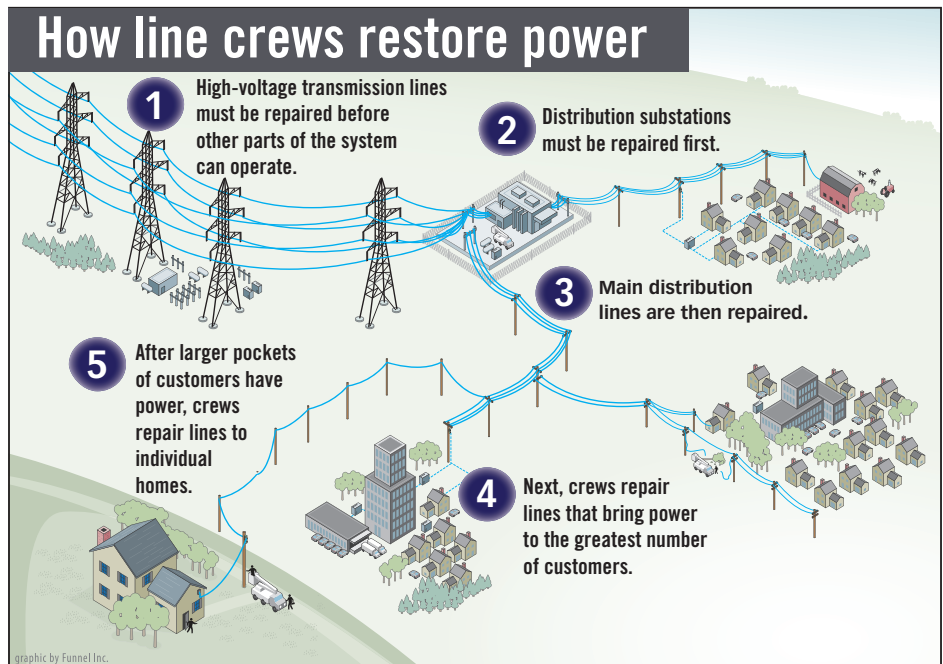
Reflection In looking back at this past year, we're grateful that we were able to make a positive impact in your communities through RECare, donations and economic development.

In addition, we work closely with our local high schools to send students to Washington, D.C. on the Youth Tour and to award college scholarships.

There are other ways we can help your communities, whether we're providing information about our programs or helping you find ways to save energy at home, we want you to know we're here to help.

Looking ahead Looking ahead to 2020, we hope you will share your opinions with us. We recognize that our members have a valuable perspective, and that's why we continually seek your input. Whether through community events, our social media channels or the annual meeting, we want to hear from you. We are led by you, and we depend on your feedback.

As we prepare for next year, we look forward to the opportunity to serve you and your community. On behalf of the cooperative family, we hope your holidays are merry and bright!



When a widespread outage occurs, line crews work long hours to restore service safely to the greatest number of members in the shortest time possible. Working from substations to homes results in faster repairs for the most members.



Board

Of

Directors

Josh Amonson ★ Donald

Christopherson ● Marion Denger

Ted Hall ● Scott Stecher

Allyn Waddingham ● Jim Wellik

Employees

Melia Asche ★ Chad Chapman

Austin Codner ● Lori Demuth ● Nick Dennler

Heather Evje ● Todd Foss ● Jane Greiman

Jared Hannasch ● Wes Held ★ Bill Hicok ● Kevin Hoshaw

Steve Jackson ● Darren Johnson ● Don Kamrad

Tim Marienau ★ Matt McDermott ● Scott Muhlenbruch

Butch Norem ● Sarah Olson ★ Jade Prignitz

Dylan Ptacek ● Pat Reiland ● Brian Ring ● Kevin Rotschafer

Scott Scheffel

Tim Slaichert

Andrew Stupka



Please note, we will be closed on the following dates:

December 13th: All-employee safety meeting

December 24th & 25th: Christmas

January 1st: New Year's Day

To report an outage, call 1-800-728-0013

Phones are answered 24/7

From our Prairie Energy family to yours, have a Merry Christmas and a Happy New Year!

iNtouch® is the official publication of Prairie Energy Cooperative
2099 Highway 3W • Clarion, Iowa 50525-0353
Phones answered 24/7: (515) 532-2805 • Pay-by-Phone: 844-241-0265
Offices hours: Monday through Friday from 7:30 a.m. to 4:00 p.m.
Tim Marienau, CEO



Follow us on Facebook at
<https://www.facebook.com/PrairieEnergyCooperative>

smart choices

See the latest issue of our e-newsletter at www.prairieenergy.coop



Pay your bill online with SmartHub

This institution is an equal opportunity provider and employer.