

82nd annual meeting of the members held



Prairie Energy Cooperative's board president, Marion Denger, welcomes members to their annual meeting.

Prairie Energy Cooperative held its annual meeting of the member/owners on June 5 at the Belmond-Klemme High School in Belmond.

Golf cart service was provided by Schroeder Golf Carts from the parking lots to the front entrance of the school. Hillside Cattleman's provided members and guests with a dinner option of pork loin or chicken, while local FFA students assisted with plates and clearing tables. Prior to the business meeting,

entertainment was provided by talented country singer and Nevada, Iowa, native Neil Hewitt.

Directors Allyn Waddingham – District 3, and Donald Christopherson – District 7 ran unopposed and were each appointed to serve another three-year term on the board of directors.

Secretary/Treasurer Donald Christopherson gave the secretary/

treasurer's report, followed by a presentation by CEO Tim Marienau. The CEO's presentation focused on the continuing efforts of the cooperative to keep electricity for our members reliable and affordable, while staying committed to the seven cooperative principles. Members and guests were introduced to all employees of Prairie Energy, and Donald Christopherson was recognized for 30 years of service.

The guest speaker of the night was Corn Belt Power Cooperative's Vice

President of Corporate Relations Ryan Cornelius, who shared how Corn Belt receives its power supply, what the power supply generation consists of, ongoing work and projects Corn Belt is assisting with and what to look forward to in the future.

Following adjournment of the business meeting, Board President Marion Denger said a few words and held a moment of silence for the late Darrell Goff, who was a part of the REC family for 37 years. President Denger then drew names and awarded two lucky winners two spots each on the Energy Trail Tour bus traveling to Basin Electric Power Cooperative in Bismarck, North Dakota. Winners were Byron & Shirley Ruter of Kanawha and Wayne & Bev Rietema of Kanawha.

Following the meeting, each membership received an ice cream scoop and a \$20 bill credit.

An organizational meeting was held following the annual meeting and officers elected were as follows: Marion Denger, president; Jim Wellik, vice president; Donald Christopherson, secretary/treasurer; Scott Stecher, assistant secretary/treasurer and Corn Belt representative; and Tim Marienau, CEO.



A big thank you from everyone here at Prairie Energy to those who helped make this year's annual meeting a success. We hope to see you next year!

Enhanced heat pump incentive available

If it is time to replace your air conditioning system or your furnace, consider an air source heat pump. A heat pump, in cooling mode, will keep your home cool and comfortable in the summer more efficiently than an air conditioner. In heating mode, it moves heat from the outside air to heat your home using less energy than the most efficient gas furnace.

When the outside temperature plummets below freezing for extended periods, the heat pump efficiency is reduced because there is less heat outside to move inside. However, if you have a gas furnace in addition to your heat pump, the gas furnace will kick in to help the heat pump keep you warm and comfortable.

Your cooperative offers an enhanced rebate to offset the slightly higher cost of installing an air source heat pump.

The rebate for installing an air source heat pump with gas back-up:

- Under 15 SEER—\$150/ton
- More than 15 SEER—\$300/ton

The rebate for installing an air source heat pump without gas back-up:

- Under 15 SEER—\$50/ton
- More than 15 SEER—\$200/ton

As a member-owned electric utility, we want to make sure you're using energy efficiently and we want to assist in saving energy. For more information on heating and cooling options and incentive guidelines, please contact us.



Save energy and money! Consider an air source heat pump for your heating and cooling needs.

Come and see us at the Iowa State Fair!

We are proud to be a Touchstone Energy Cooperative, part of a nationwide network of locally owned co-ops to help our members use energy wisely.

At the Iowa State Fair August 8-18, the Touchstone Energy Cooperatives of Iowa are again sponsoring the Rastetter 4-H Building on the south side of the fairgrounds. We're looking forward to connecting with fairgoers and rural 4-H families at our booth in the air-conditioned building. With a new, interactive display (pictured below), electric co-op employees will be talking about cooperative careers and our commitment to leadership development with the national Youth Tour program for high school students.

Cooperative careers

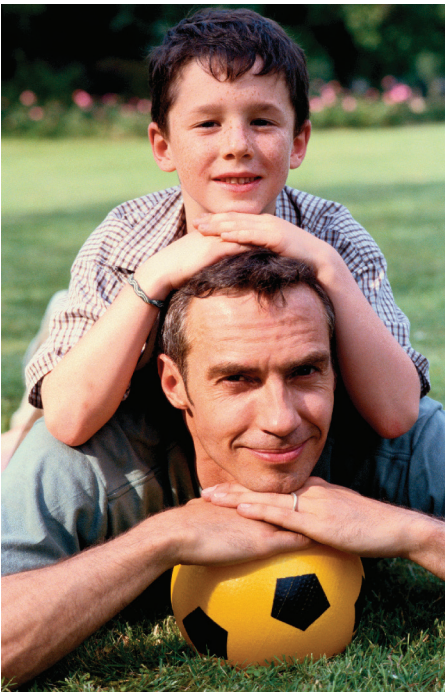
Throughout rural Iowa, more than 1,200 people are employed full-time at locally owned electric cooperatives. We hire skilled workers like linemen and mechanics in addition to professionals like accountants, engineers, communicators, human resources managers, economic development officers, administrators and customer care representatives. Electric co-ops offer competitive pay and generous benefits in an exciting and challenging industry.

Youth Tour

For over 60 years, Iowa's electric cooperatives have been sending high school students to Washington, D.C., every June for leadership development at the national Electric Cooperative Youth Tour. On the weeklong Youth Tour trip, students with a passion for government, leadership and service will meet with elected officials, learn more about American history, visit dozens of monuments and museums and come home with a greater understanding of electric cooperatives.

We're excited to share our cooperative story at the Iowa State Fair; stop by our booth and say hello!





Unplug to connect

“Almost everything will work again if you unplug it for a few minutes, including you.” Author Anne Lamott cleverly captures the benefits of unplugging in today’s device-driven, multi-tasking world.

Summer is a great time to take a family vacation, but it’s also a good opportunity to unplug from our devices and enjoy the great outdoors with family and friends.

If your summer plans include a staycation, take time to recharge your relationships and be more present with those you love. Enjoy our beautiful surroundings with your family and friends.

In our connected world, we have forgotten how to slow down. We multitask and text. We check email, then voicemail, then Facebook. Do yourself and your family a favor. Put down the device.

While your electric cooperative can’t help you recharge your relationships, we can help you save money and energy by connecting you with our energy-saving programs and services. When you plug back in, we’re just a call or click away.

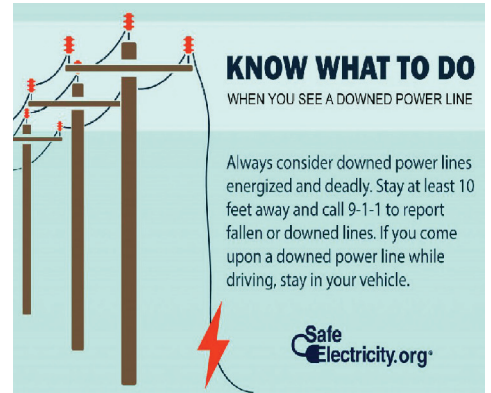
Contact us about an energy assessment, rebates and many other saving options.

Beware of downed power lines

Overhead power lines carry thousands of volts of electricity. If a line is down, always assume it is energized and dangerous, even if the power is out in your area. Touching or going near a live power line can injure or kill.

Additional safety reminders:

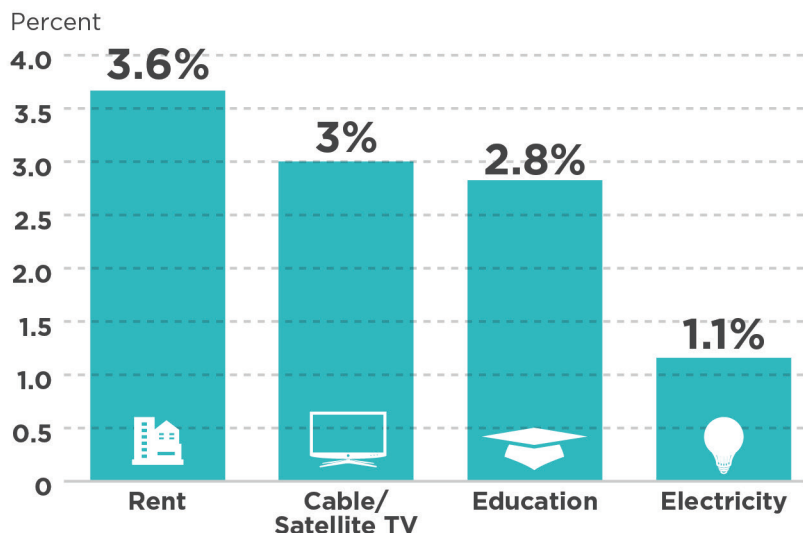
- Call 9-1-1 to report fallen or damaged power lines.
- Power lines do not have to be arcing or sparking or making a humming noise to be live.
- Do not attempt to move a downed line or anything it is touching with another object such as a stick or pole.
- Do not step in water or walk in debris near a downed power line.
- Stay at least 10 feet away from a downed power line.
- Do not attempt to drive over a downed power line.
- If a power line falls on your vehicle while driving, do not attempt to drive away or get out. Call for help and **STAY INSIDE THE VEHICLE** until utility crews say it is safe to get out. If there is a fire or you smell gasoline, hop out without touching the vehicle at the same time and do not walk, but **HOP AWAY TO SAFETY**.
- Line properties can change: A dead power line may become energized due to power restoration or back feed from backup generators.



ELECTRICITY REMAINS A GOOD VALUE

The cost of powering your home rises slowly when compared to other common expenses. Looking at price increases over the last five years, it’s easy to see electricity remains a good value!

Average Annual Price Increase 2013-2018



Sources: U.S. Bureau of Labor Statistics
Consumer Price Index



Snapshots of your 82nd annual meeting



 Follow Us On
facebook

Stay connected with us for the latest on energy saving tips and major outage updates and to see what your Prairie Energy crew is up to. We would love to hear from you and any feedback you have to offer!

iNtouch® is the official publication of Prairie Energy Cooperative
2099 Highway 3W • Clarion, Iowa 50525-0353
Phones answered 24/7: (515) 532-2805 • Pay-by-Phone: 844-241-0265
Offices hours: Monday through Friday from 7:30 a.m. to 4:00 p.m.
Tim Marienau, CEO

 Follow us on Facebook at
<https://www.facebook.com/PrairieEnergyCooperative>

smart choices 
See the latest issue of our e-newsletter at www.prairieenergy.coop


Pay your bill online
with SmartHub

This institution is an equal opportunity provider and employer.