

Annual meeting held, watch online

To protect the members, communities, special guests, and staff to prevent the spread of the COVID-19 virus, the in-person portion of the annual meeting of the membership was cancelled. For purposes of the election, a limited meeting was held on June 3, 2020, at 2:00 p.m. Board elections took place by mail-in ballot only.

Each year, two or three of Prairie Energy's seven board seats are up for election. This year, elections were held for District 2 and 5. In District 2, Ryan Eekhoff replaced Director Jim Wellik, who retired after serving 23 dedicated years on the board. In District 5, Marion Denger was re-elected to serve another three-year term on the board.

Members can go online to watch the short video in lieu of our in-person business meeting. Director elections, pandemic response, and this year's margin allocation are among topics discussed. The video can be found on our website or on our Facebook page.



Ryan Eekhoff

New director serving District 2

Prairie Energy would like to welcome newly appointed director Ryan Eekhoff. Ryan and his wife Lori live in Erin township. They have three children, Marissa, Wyatt, and Alizabeth.

He currently works at First Citizens Bank in Kanawha as a loan officer and is also a third-generation farmer. His hobbies include spending time with family and working with show cattle.

Ryan is a member of the Hancock County Extension Council and currently serves as a deacon at the Britt Christian Reformed Church.

When asked why he wanted to serve on the Prairie Energy Board of directors, Eekhoff responded: "I would like to create a better understanding of how our local electric cooperative works and how we can better serve our members."

Director Wellik retires

After 23 years of service, Jim Wellik decided it was time to retire. Wellik was elected in June of 1997 and has served as vice president on the board of directors for the past several years. He and his wife Carla are ISU fans, avid movie goers, and have three grandchildren to keep them busy.

"I have thoroughly enjoyed serving as a director of Prairie Energy Cooperative for the past 23 years," says Wellik. "There have been tremendous changes in the electrical industry, with the onset of wind and solar generation. I'm sure there will be a lot more changes in the next 20 years. The one thing that will remain constant is that Prairie Energy will continue to provide affordable, reliable electricity."



Member appreciation day cancelled

Due to ongoing safety concerns, the member appreciation day planned for August 7 has been postponed until further notice.



Touchstone Energy®
Cooperatives

The power of human connections®

We're here to help you save

Your electric cooperative is here for you with information and ideas to help you save energy and money.

Summer is a great time to conduct an energy assessment of your home and identify ways to boost energy efficiency. Understanding how your home uses energy can help you determine the best ways to modify energy use and keep more money in your wallet.

An energy assessment is one of the best ways to determine how energy efficient your home is—and can help you identify areas for potential energy savings. Try ENERGY STAR®'s online assessment. Visit energystar.gov, then enter “home energy yardstick” in the search box to get started. Or, you can contact us to conduct an assessment.

Another way to save is to shift

some of your daily chores such as running the dishwasher or doing laundry during off-peak hours (when people are using less electricity). By doing so, you may see meaningful savings on your energy bills.

Or, if you have a furnace, use your programmable thermostat to adjust the settings so that your heating and air conditioning systems sync with the off-peak rate periods. You can also use automatic timers to run hot tubs, pool pumps, water heaters, and other appliances in the same way. Be sure to program the timers to coincide with the less expensive off-peak times.



And finally, if you are in the market for a new appliance, look for the ENERGY-STAR® label on the Energy Guide to be able to take advantage of your electric cooperative's rebates.

As your trusted energy advisor, we're here to help. If you have questions about your bill or additional ways to save energy, please let us know. We're only one click or phone call away.

Attending Farm Progress Show?

Visit the Rural Electric Cooperatives of Iowa at Lot 10S to enter in prize drawings, learn about electric safety and energy efficiency, and more!

September 1 - 3 • Boone, Iowa

Your Touchstone Energy® Cooperatives 

Visit us at Farm Progress Show

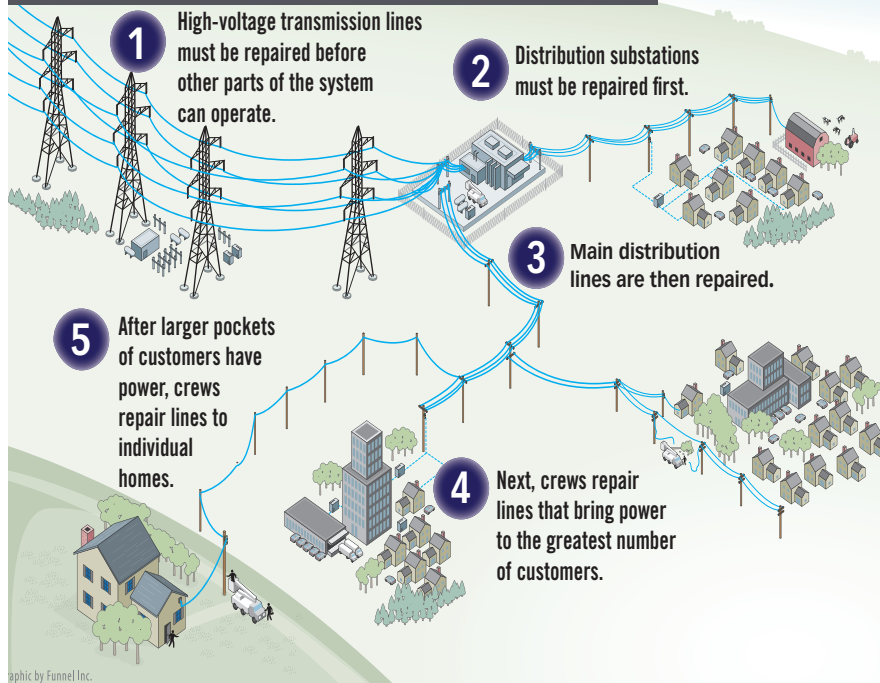
The Farm Progress Show, our nation's leading outdoor farm show, will be in Boone Sept. 1–3, and we want to see you there.

Stop by to learn how to be safe around electricity, improve energy efficiency, and much more. Members are encouraged to register for prizes, ask questions of co-op staff, and watch a high-voltage safety demonstration!

Hosted in Iowa every two years, this major agricultural event gives visitors the opportunity to see the latest equipment, seed, crop chemicals, field demonstrations, livestock handling, equine events, rural life programs, entertainment, arts and crafts, and more.

The 2020 show will be held at the Central Iowa Expo at 1827 217th Street in Boone, Iowa. Learn more at www.farmprogressshow.com. We look forward to seeing you!

How line crews restore power



Understanding power outages

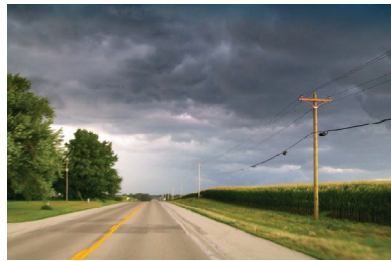
While your electric cooperative does everything it can to reduce the possibility of outages to your home or business, they do occur. There are a variety of reasons power outages can occur, including severe storms, tree limbs coming into contact with power lines, vehicles crashing into utility poles, and animals causing short circuits while climbing electrical equipment.

The number one focus of your cooperative is public safety. This means crews will clear lines and equipment that could pose safety hazards to the public. Next, they will turn their attention to power generation facilities that generate the actual electricity that powers your home or business. After that come the transmission line and substation equipment repairs. Then, we will focus on distribution lines and tap lines that provide power to homes or businesses, and then connections to individual members.

What can YOU do to keep your family safe? We suggest you:

- Call us immediately.
- Use safe alternative food preparations. A barbecue grill is an excellent way to prepare food. Always grill outside.
- Have a storm kit (with items like flashlights, battery-operated radio, batteries, and first-aid supplies) prepared.
- Turn off electrical appliances and unplug major electronics. Power sometimes comes back in surges, which can damage electronics. Leave one light on to indicate that power has been restored. Wait a few minutes and then turn on other appliances and equipment—one at a time.

For more information, visit SafeElectricity.org.



Feel a shock? Swim away from the dock

We want to help keep the fun in water recreation activities so we are sharing the message, “If you feel a shock, swim away from the dock,” to educate people on how to stay safe from a hidden hazard called electric shock drowning (ESD).

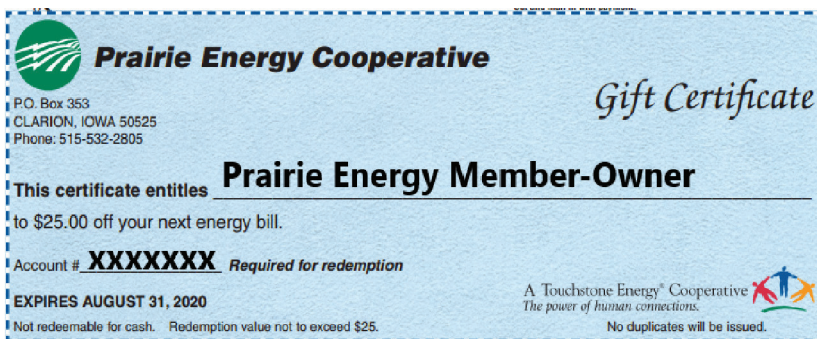
Outdated wiring and a lack of proper safety equipment on boats and docks can cause situations where electricity “leaks” into the water. It’s a particularly dangerous hazard because it’s impossible to tell by sight if the water is energized. According to the Electric Shock Drowning Prevention Association, most ESD deaths have occurred in public and private marinas and docks.

Safe Electricity recommends that individuals do not swim around docks with electrical equipment or boats plugged into shore power. If you are in the water and feel electric current, shout to let others know, try to stay upright, tuck your legs up to make yourself smaller and swim away from anything that could be energized. Do not head to boat or dock ladders to get out.

If you see someone who you suspect is getting shocked, do not immediately jump in to save them. Throw them a float, turn off the shore power connection at the meter base, and/or unplug shore power cords. Try to eliminate the source of electricity as quickly as possible; then call for help.

Thank you to our membership

Have you mailed in your gift certificate? Even though we at Prairie Energy missed seeing everyone at the annual meeting, we still want to thank you for your membership. Make sure to clip the gift certificate from the annual report, fill it out, and mail it back or drop it off in our 24/7 drop box at the office to redeem your \$25 bill credit.



Be sure to turn in your gift certificate for your \$25 bill credit!

Don't let summer heat spoil family fun

Even as restaurants start to reopen and take-out food is available everywhere, home is where the cookouts happen.

Moving dinner outdoors is a great way to save energy in the summer - firing up a gas or charcoal grill uses zero electricity. Other ways to keep energy bills down at dinnertime:



- **Get creative with cold side dishes:** Learn how to make gazpacho, colorful salads that mix fruit with raw veggies, and dips featuring avocados, garbanzo beans or tomato bases.
- **Grill veggies outdoors rather than steaming them on the stove:** Asparagus, corn-on-cob and skewers of mushrooms, onions, tomatoes and zucchini all taste better in the summer when they're grilled.
- **Make potato salad or pasta salad in large batches:** That way, you only have to boil the ingredients on the stovetop once for a supply that can last over several dinners.
- **Skip the baking:** Order fresh bread and desserts from a nearby shop to show your support for local businesses and keep your own oven closed for the season.

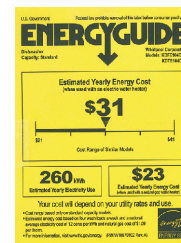
Need some fresh recipe ideas? Don't forget about the recipe archives at www.livingwithenergyiowa.com, where you can search by main ingredient, category or key word. Try searching for "summer" or "grill" for some great warm weather recipes!

Appliance rebates

Contact us for information on our rebates for new, ENERGY STAR-rated appliances installed at members' locations:

- Clothes dryer - \$50
- Clothes washer - \$50
- Dishwasher - \$25
- Freezer - \$25
- Refrigerator - \$25

Check the Energy Guide for the ENERGY STAR label.



Let's be friends!



Like "Prairie Energy Cooperative" on Facebook and be among the first to see Prairie Energy news—updates on major outages, safety information, energy saving tips, and more.

Our Values

Integrity | Accountability | Innovation | Commitment to Community

iNtouch® is the official publication of Prairie Energy Cooperative
2099 Highway 3W • Clarion, Iowa 50525-0353
Phones answered 24/7: (515) 532-2805 • Pay-by-Phone: 844-241-0265
Offices hours: Monday through Friday from 7:30 a.m. to 4:00 p.m.
Tim Marienau, CEO



Follow us on Facebook at
<https://www.facebook.com/PrairieEnergyCooperative>

smart choices

See the latest issue of our e-newsletter at www.prairieenergy.coop



Pay your bill online with SmartHub

This institution is an equal opportunity provider and employer.